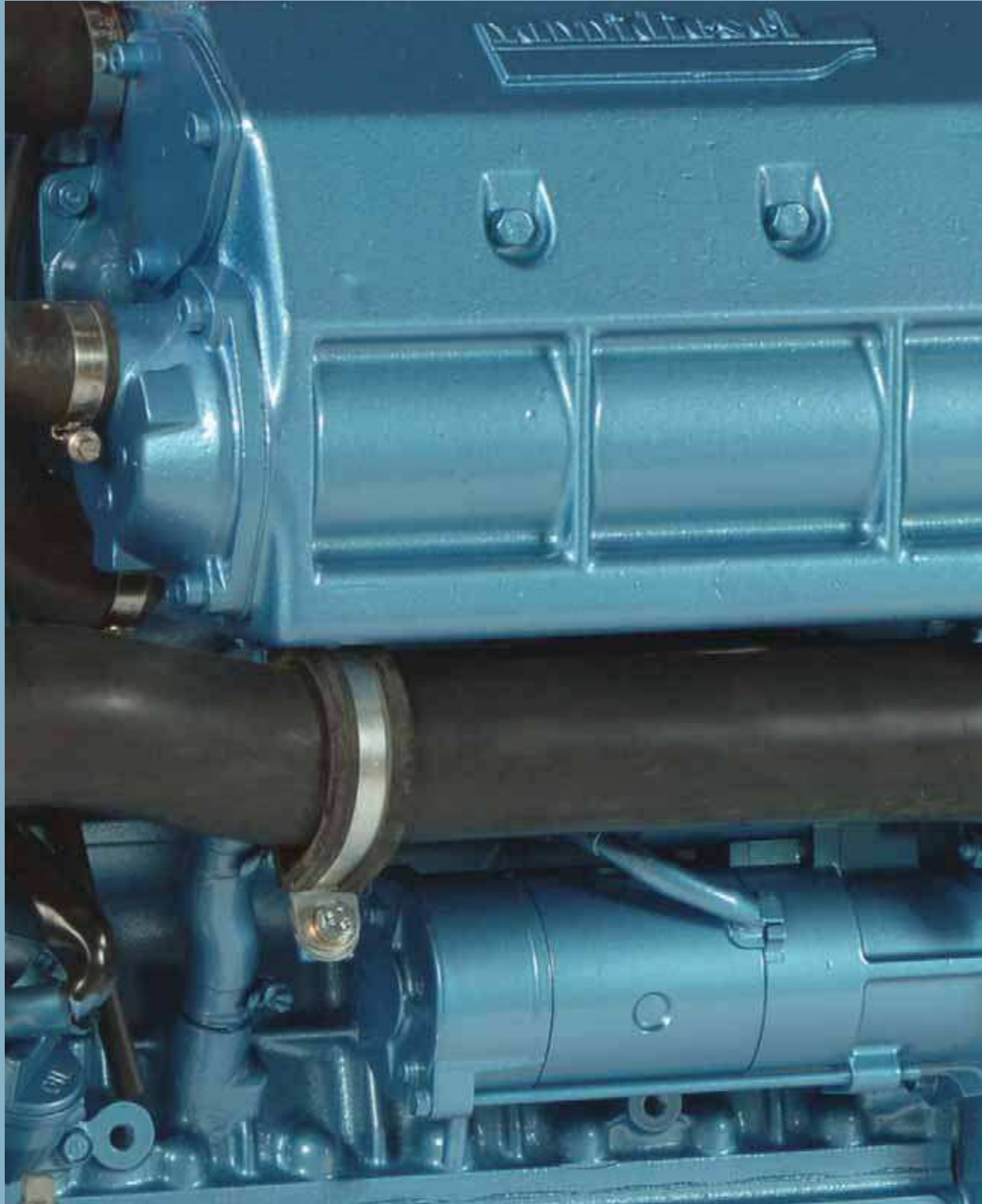


# NEW

BASE **Кубота**



5  
1  
4  
2

# nannidiesel

energy in blue

N4.115



**manmidiesel**

**energy in blue**

# N4.115

**nannidiesel**  
energy in blue

## 115 Hp (84.6 kW) at 2600 rpm

TURBO DIESEL INTERCOOLER base



### ENGINE BASE

This prestigious partner of industrial engines provides you with high quality, reliability and the latest diesel technology.

### APPLICATIONS

The N4.115 is a new diesel engine with 115 HP specially designed to equip large sailing yachts as well as pleasure and commercial workboats.

### PERFORMANCE

The very high torque at low RPM of N4.115 makes it particularly suitable to power displacements boats. This provides better low speed handling.

The fuel consumption is extremely low due to the **E-CDIS** (Center Direct Injection System) with 4 valves per cylinder.

### COMFORT

Thanks to the maximum torque at only 1600 RPM and its double balancer shaft, the N4.115 gives an exceptionally low level of noise and vibration.

### COMPACT

The design of the N4.115 has been optimized to give an engine with large cubic capacity at the similar size to one with less capacity.

### ENVIRONMENT FRIENDLY

The N4.115 exhaust level is well below the requirements of the most stringent emission regulations of the new European Directive **2003/44/EC** and the American **EPA** Tier 2.

PRESENTATION

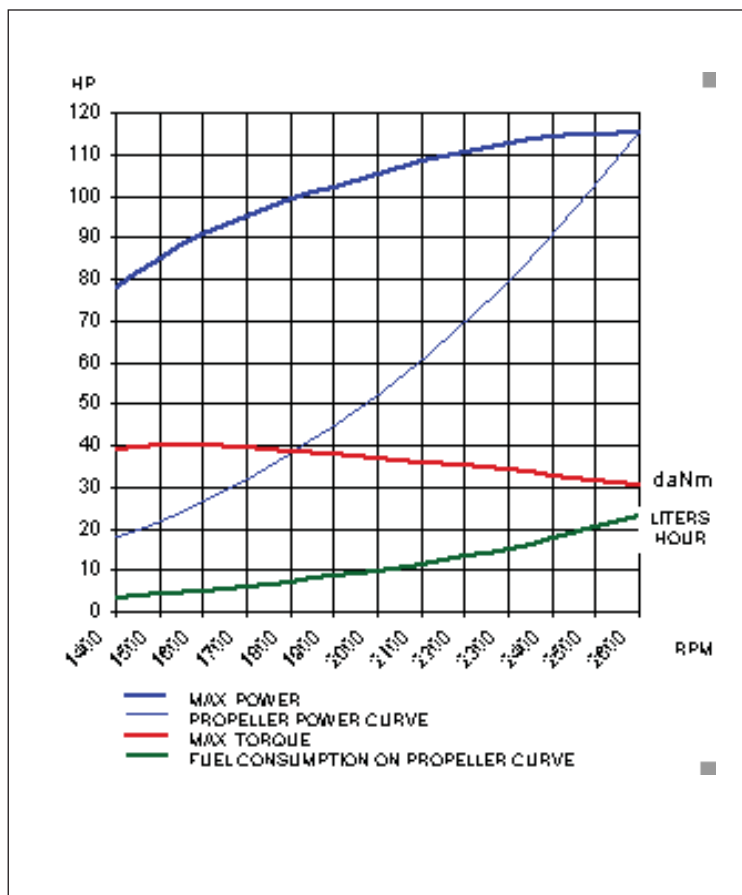
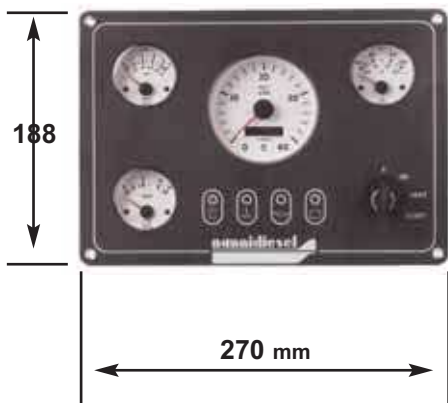
## N4.115

<b>Base:</b>	<b>Kubota</b>
Fuel type	Diesel
Power	115 HP (84,6 kW)
Max .RPM	2600 RPM
Displacement	3.769 liters (229.9 cu inch)
N° of cylinders	4
Bore and Stroke	100 x 120 mm (3.94" x 4.72")
Compression ratio	21.8 / 1
Combustion System	Direct injection E-CDIS with 4 valves by cylinder
Intake	Turbo-Charger with Air Cooler
Cooling	Dual circuit with Heat Exchanger
Electrical Equipment	12 V
Alternator	100 Amp.
Instrument Panel	C 3
Transmission	1.5/1-2/1-2.5/1 hydraulic or mechanical on request
Dry weight (with ZF 25A transmission )	371 kg (817.9 lbs)

### Hose diameters:

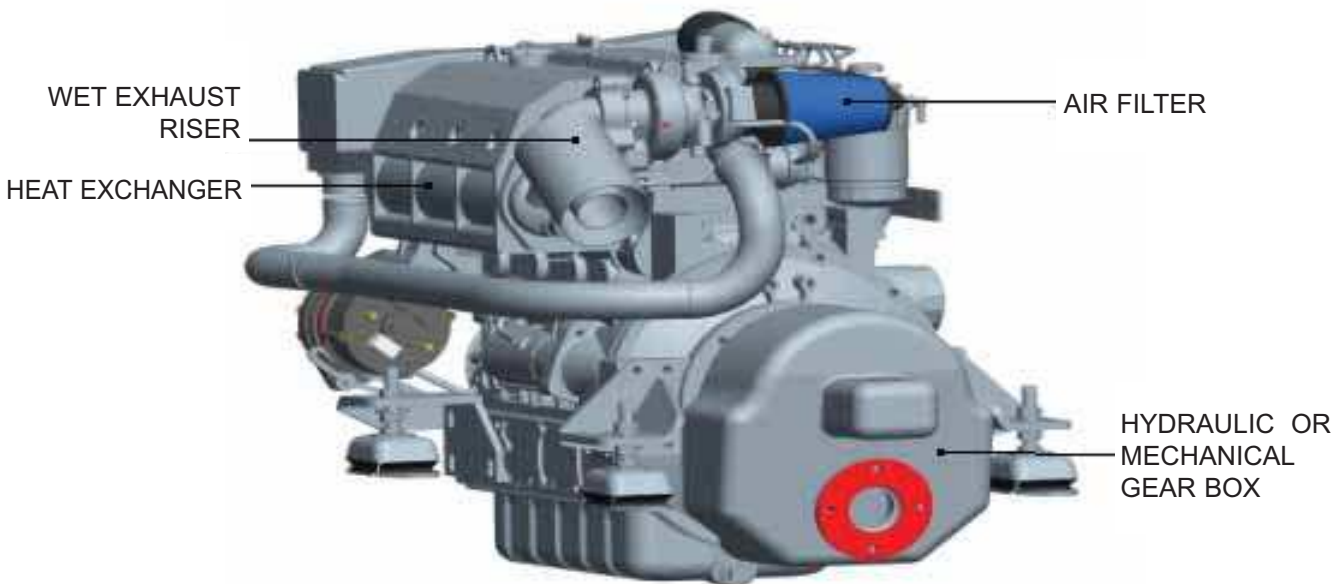
Exhaust	104 mm (4.09")
Fuel	10 mm (0.39")
Sea water	32 mm (1.26")
Max installation angle	15° ( dynamic )

**INSTRUMENT PANEL  
C 3**

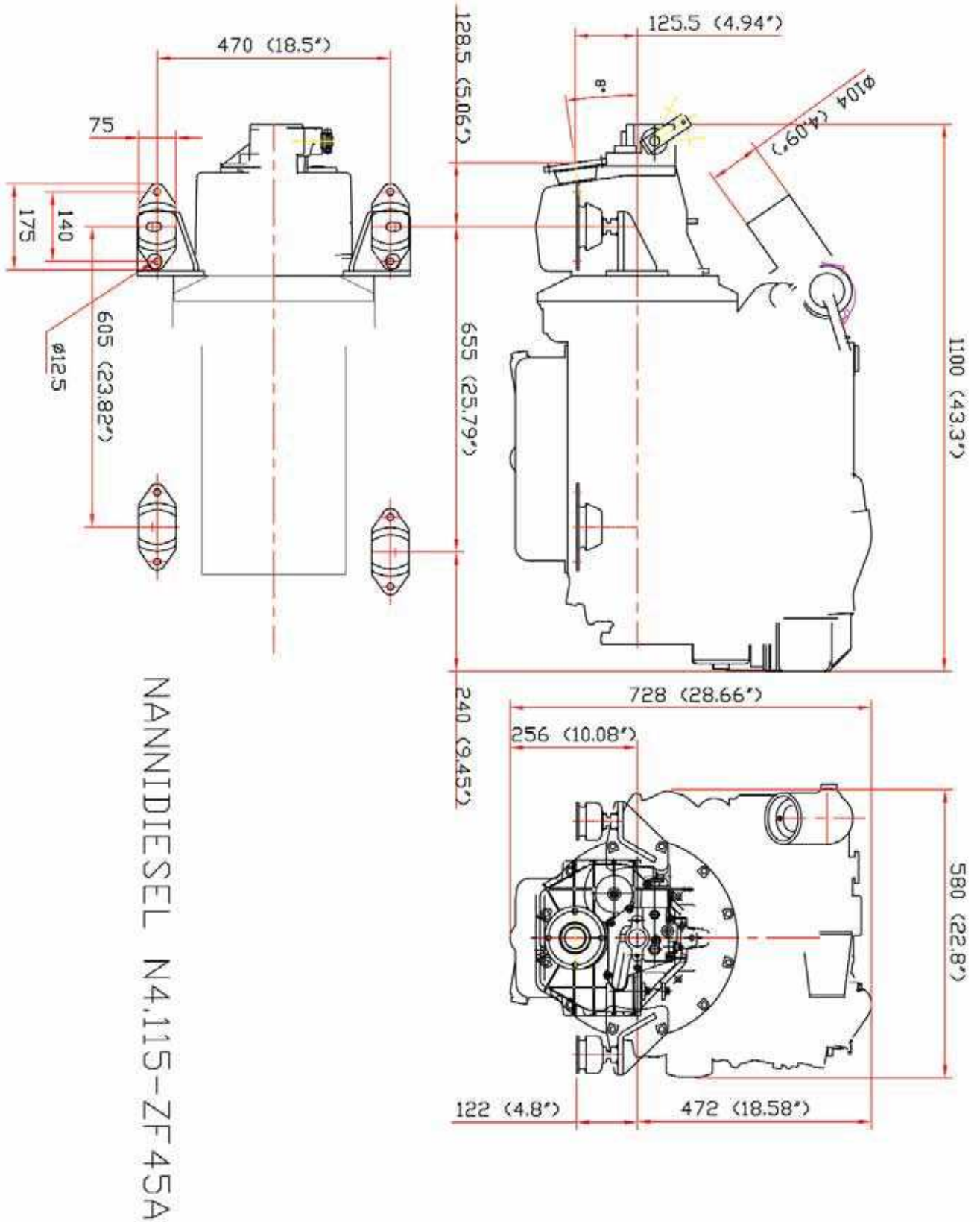


# N4.115

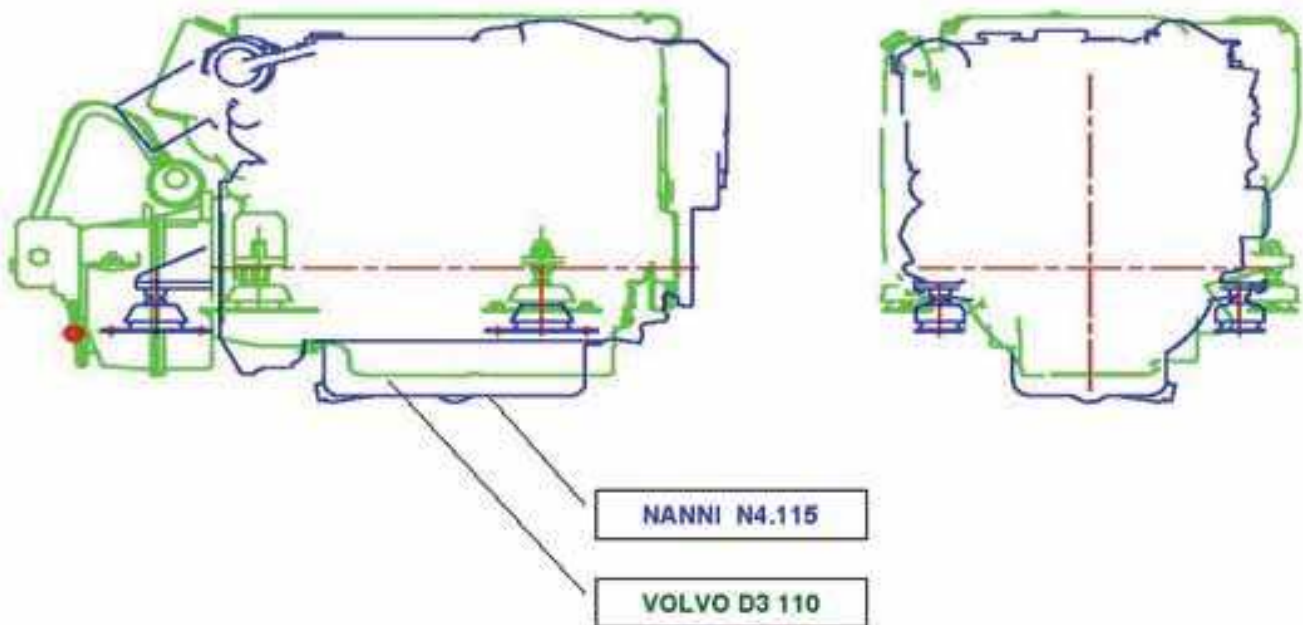
# MARINIZATION DETAILS



## N4.115



## COMPARISON WITH COMPETITORS

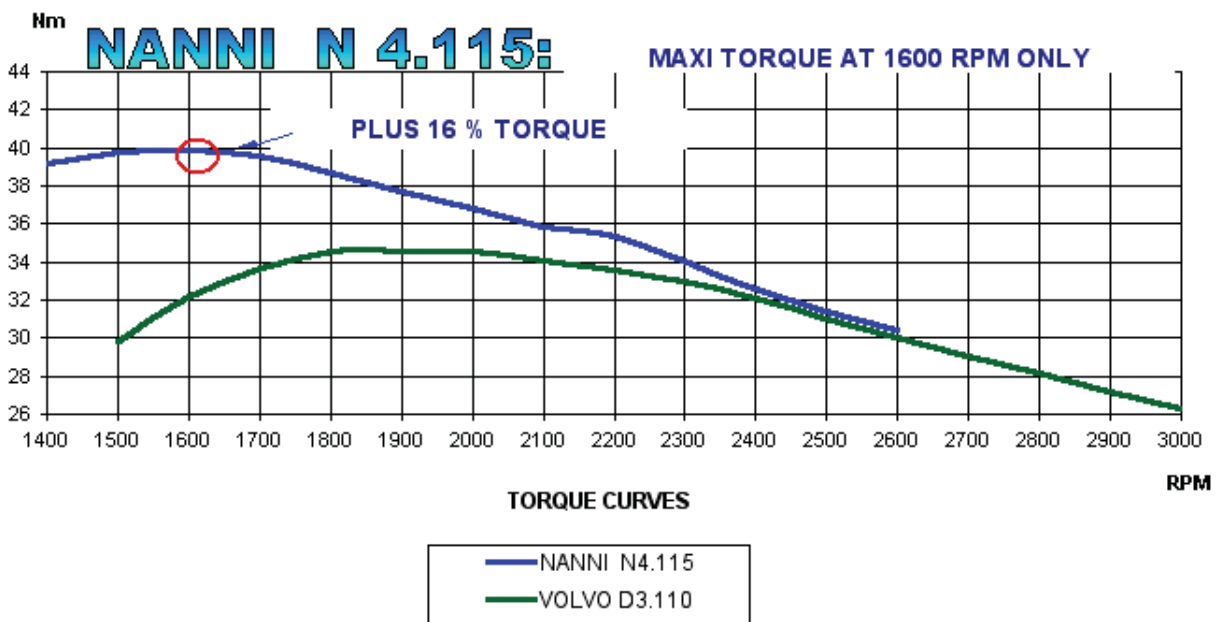
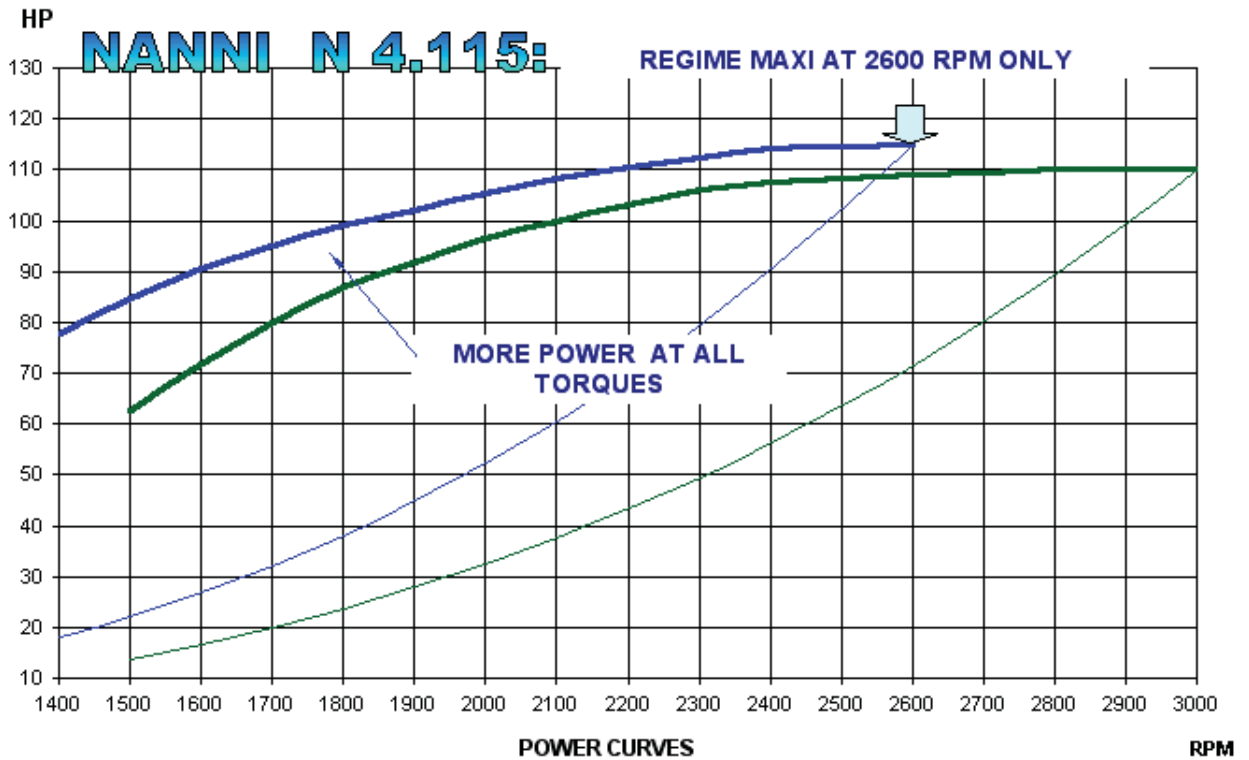


### THE N4.115 HASN'T ANY COMPETITOR !

FOR ITS DISPLACEMENT OF 3,8 LITRES, IT IS PARTICULARLY COMPACT.  
ITS DIMENSIONS ARE COMPARABLE TO VOLVO D3 110 WHICH HAS A FAR LOWER  
DISPLACEMENT OF 2,4 LITRES.

## N4.115

COMPARISON OF POWER AND TORQUE CURVES BETWEEN  
NANNI N4.115 AND VOLVO D3.110



COMPARISON NANNI ENGINE N4.115 WITH OTHER BRANDS

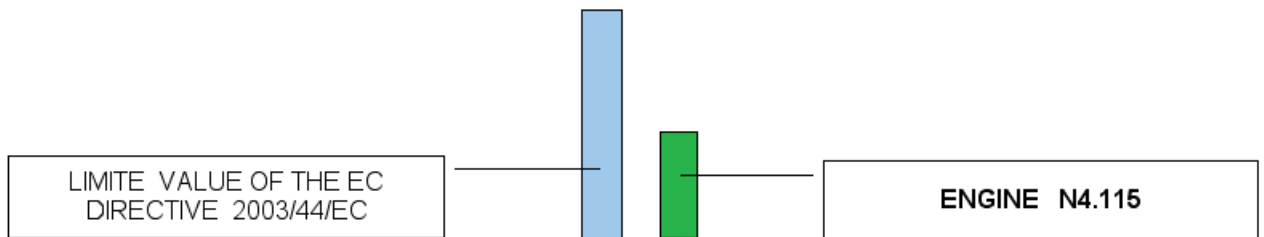
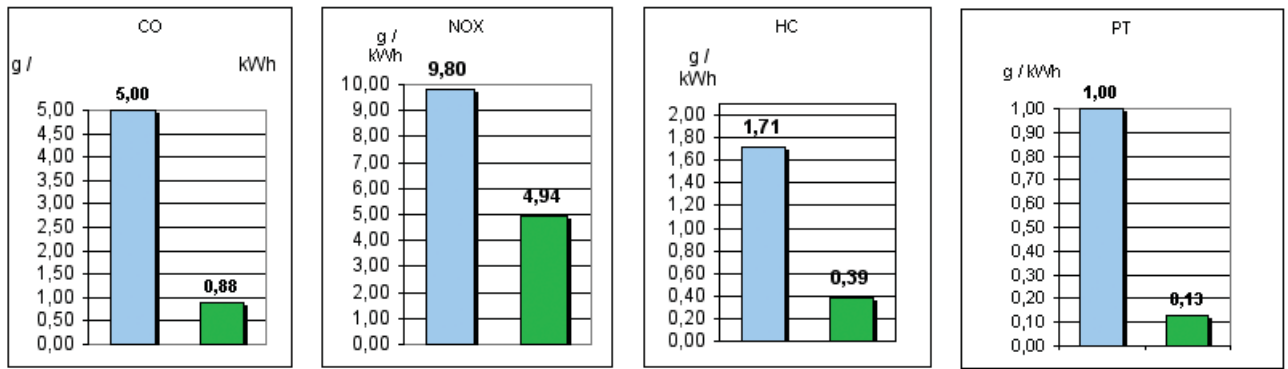
BRAND	TYPE	CH	RPM	NB CYL	CYL / CM3	WEIGHT	LENGTH	WIDTH	HEIGHT	OBS
<b>NANNI</b>	<b>N4.115</b>	<b>115</b>	<b>2.600</b>	<b>4</b>	<b>3.769</b>	<b>371</b>	<b>1.096</b>	<b>672</b>	<b>741</b>	Turbo intercooler
VOLVO	D3.110	110	3.000	5	2.400	250	1.072	654	650	Turbo intercooler
YANMAR	4 JH3 - HTE	100	3.800	4	1.955	259	888	580	660	Turbo intercooler


 THE N4.115 ENGINE HASN'T ANY COMPETITOR !

**N4.115**

**COMPARISONS**

### COMPARISON OF THE N 4 .115 EMISISONS VERSUS THE LIMITS OF THE EUROPEAN DIRECTIVE 2003/44/EC



THE N4.115 ENGINE'S EMISSIONS ARE FAR BELOW THE LIMITS OF THE EUROPEAN DIRECTIVE

DETAILS MAKE THE DIFFERENCE



it's a Nanni:  
Quality of the Product  
Quality on the Service

**nannidiesel**

energy in blue

MARINE ENGINES FROM 10 TO 320 HP



**Nanni Industries** S.A.S. Z.I. - 11, Avenue Mariotte - 33260 La Teste - France  
Tél. +33 (0) 5 56 22 30 60 - Fax +33 (0) 5 56 22 30 79  
[contact@nannidiesel.com](mailto:contact@nannidiesel.com) - [www.nannidiesel.com](http://www.nannidiesel.com)

© Ufficio Grafico Nanni Trading, Roma - design: MONICA INFANTINO

## AFRICA

ALGERIA  
TUNISIA  
MOROCCO  
IVORY COAST  
MADAGASCAR  
SOUTH AFRICA  
EGYPT  
MAURITANIA  
SENEGAL  
REUNION ISLAND

## EUROPE

DENMARK  
ESTONIA  
FINLAND  
FAERO ISLANDS  
IRELAND  
ITALY  
LATVIA  
MALTA  
THE NETHERLANDS  
UNITED KINGDOM

## BELGIUM

CROATIA  
CZECH REPUBLIC  
PORTUGAL  
RUSSIA  
SPAIN  
SWEDEN  
SWITZERLAND  
NORWAY  
POLAND  
GERMANY  
GREECE  
HUNGARY  
ICELAND  
TURKEY  
SLOVENIA  
ROMANIA

## OCEANIA

AUSTRALIA  
NEW ZEALAND  
NEW CALEDONIA  
FRENCH POLYNESIA

## ASIA

INDONESIA  
JAPAN  
ISRAEL  
BAHRAIN

## AMERICA

GROENLAND  
MARTINIQUE  
GUADELOUPE  
SAINT MARTIN  
VENEZUELA  
CHILE  
ARGENTINA  
ECUADOR  
BELIZE  
CUBA  
U.S.A:  
ANNAPOLIS  
MIAMI  
HOUSTON



## Nanni Industries s.a.s

Z.I. - 11, Avenue Mariotte - 33260 La Teste – France Tél. +33 (0) 5 56 22 30 60 - Fax. +33 (0) 5 56 22 30 79

[contact@nannidiesel.com](mailto:contact@nannidiesel.com) – [www.nannidiesel.com](http://www.nannidiesel.com)

## Nanni Trading s.r.l. - Export Dept. / Italia

Via A.G. Bragaglia, 31/A - 00123 Roma - Italia Tel. +39 06 30 88 42 51/2/3 – Fax. +39 06 30 88 42 54

[info@nannitrading.it](mailto:info@nannitrading.it) – [www.nannitrading.it](http://www.nannitrading.it)